

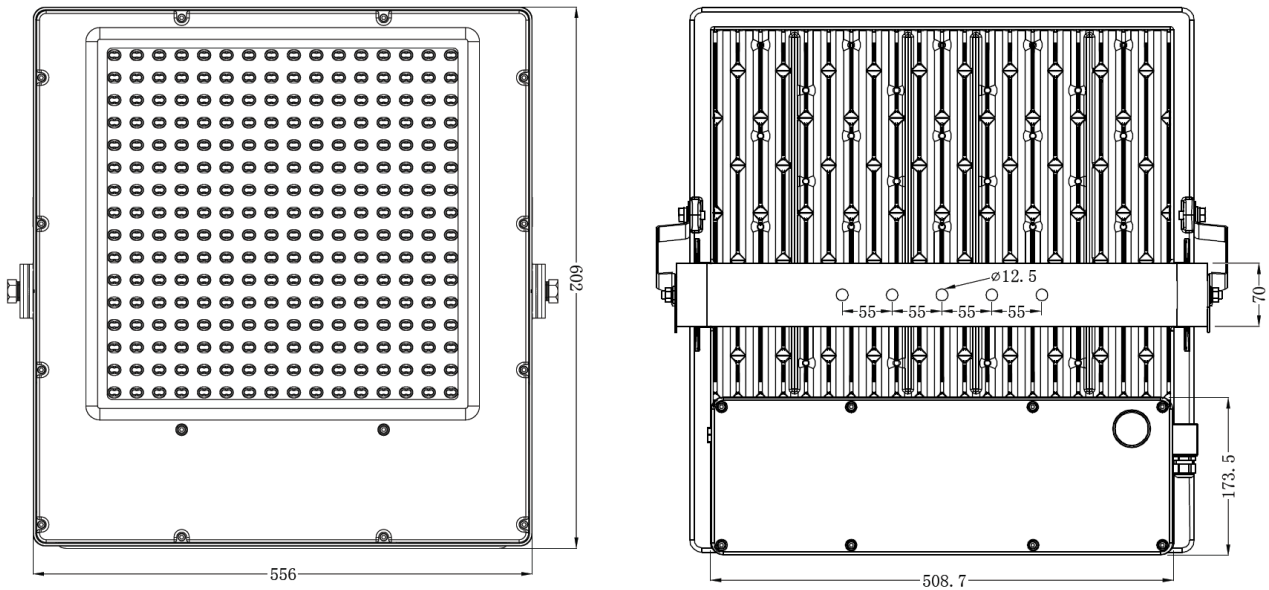
SPECIFICATIONS

2022.01.20

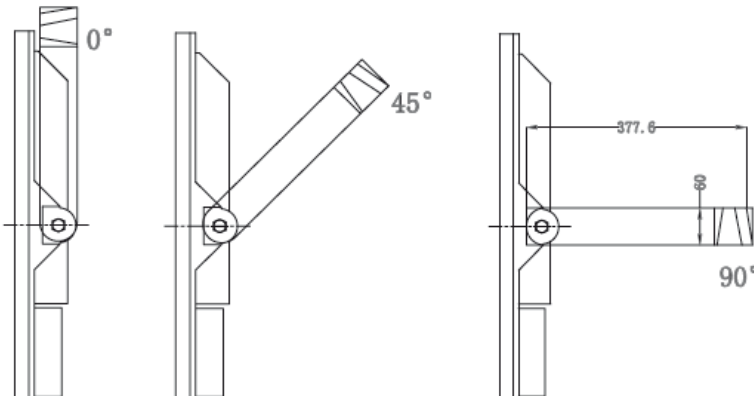
LED projector <i>PH-T300S / T450S</i>		
Model	PH-T300S	PH-T450S
Replace,ment	HID 700-1000W	HID 1000-1500W
Input Voltage	AC100~240V 50/60Hz	
Power	300W	450W
Lumens	37200lm	54000lm
Color temp.	6000K / 3000K	
CRI	75 Ra	
LED	CREE	
Lens	25°/ 40°/ 30×65°/ 60°/ 80°/ 60×90°/ 60×135°/ 85×150°	
Lifetime	60000 hours	
Working temp.	-40℃~50℃	
Resistance	Vibration resistance: 4G / Impact resistance: 40G	
Wind-proof	70m/s (When installed directly downward 110m/s)	
Materials	Lamp body: Aluminum alloy / Cover: Tempered glass / Bracket: SUS304 (t=6mm)	
Surfaece	Heavy salt resistant coating	
Dimension	602×556×77mm	
Weight	16.5kg	
IP code	IP66	



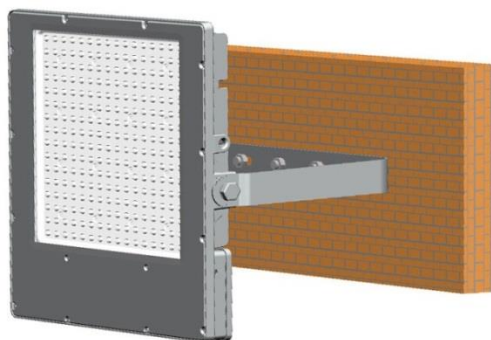
■ Outer dimensions



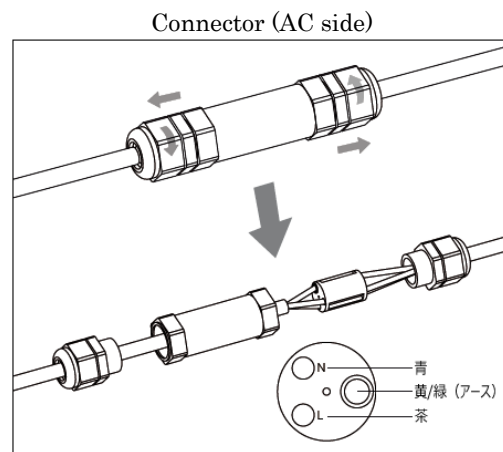
■ Bracket angle adjustment



■ How to install

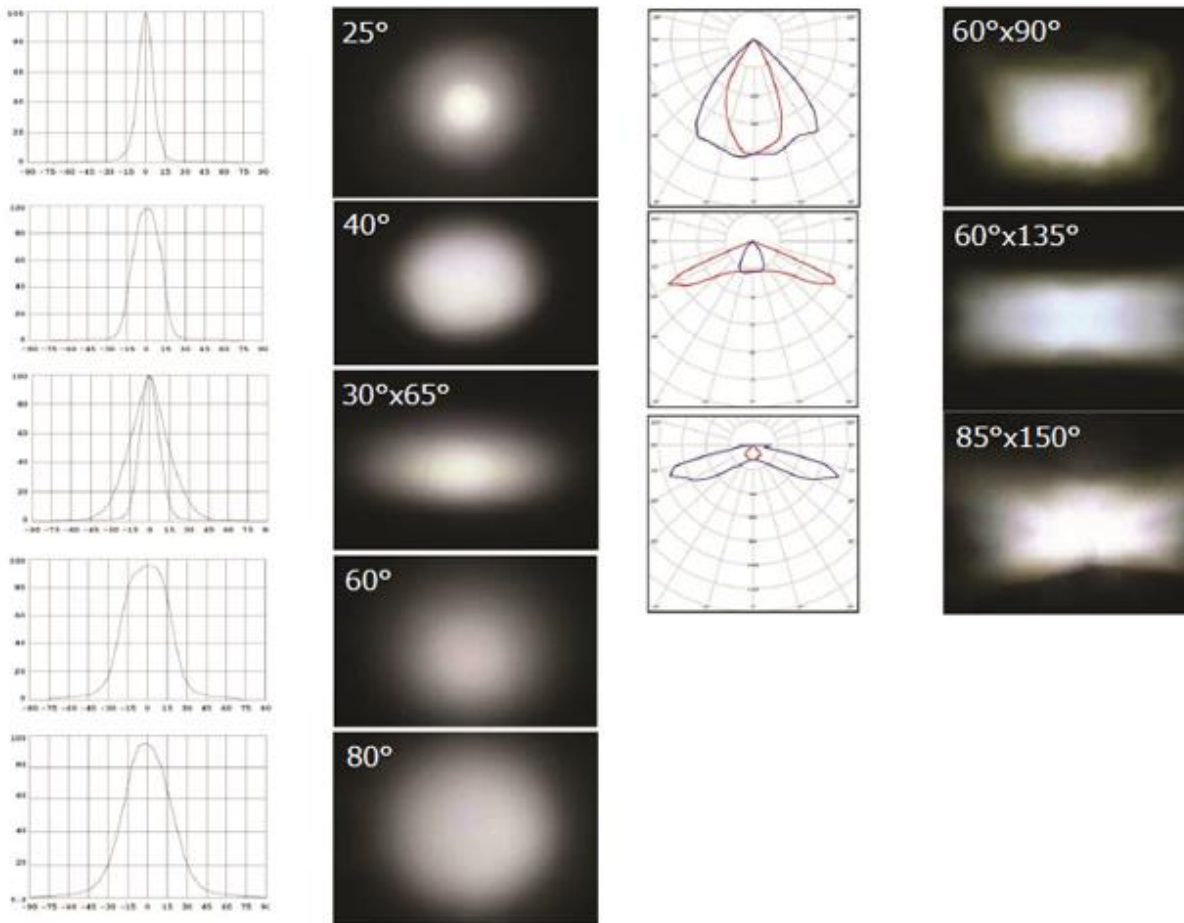


Install to the ceiling or wall using M12 bolts.



■ **Beam angle (LED lens)**

The following beam angles are available.



■ **Anti-fall wire**



PH-T300S/450S series comes with two anti-fall wires as standard.

Anti-fall wire (2 pcs)
φ 3mm, length: 900mm